

Install ActivInspire at Home

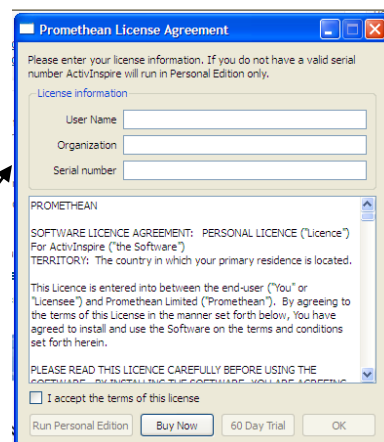
In order to install ActivInspire at home, go to the following link on Promethean Planet:

<http://www.prometheanplanet.com/en-us/support/software/activinspire/>

1. Click on the Download ActivInspire Link about half way down the page.
2. It may prompt you to login if you didn't at the beginning when you opened Promethean Planet.
3. Choose US English. When it prompts, just answer the questions with the **STARS** then hit submit
4. Downloading should start automatically or you may have to hit RUN
5. This will take a few minutes (10-15 approximately) so let it go
6. Once downloading has finished, you will still need to activate the software – so...



7. Double click on the ActivInspire icon now located on your desktop...you will then be prompted with a box for registration
8. In the **username/organization** lines just write your name or BCPS
9. Where it prompts you for the **serial number**, put in the following serial number: 0015-1192-8158-7056-0251. (This is okay for EVERYONE to use these numbers as long as you use the equipment at school.) Then just click OKAY - DO NOT click on the Personal Edition or TRIAL version or it will look and react differently than what you have and /or you will not be able to use the software after the time limit.
10. When it prompts you with the “what you are familiar with” question...say ActivStudio and then hit continue or okay. It will now open the software.
11. As it is loading, you obviously will not have a board connected so no big deal when it says no board is found.
12. You will have the software, but you will only have a SHARED RESOURCES folder with 6 or 7 other folders (not like ALL of the folders you may have at school). If you would like to know how to import other RESOURCES such as the SUBJECTS folder and RESOURCE PACKS, please let us know and we'll walk you through it. ☺
13. Now that you have the software at home, you can download flipcharts, manipulate them using the software, and then save them to a flashdrive/external hard drive to bring them to school. Ninety-nine percent of the time the flipcharts are way too big to upload to eLocker or email (usually will not happen) so it is best if you just save them and bring them in with you.



Downloading Resources:

1. Go to www.prometheanplanet.com and log in.
2. To DOWNLOAD flipcharts – click on Resources in the top bar, then LESSONS, then choose your Keywords, Subjects, and Grade Level to find some specific flipcharts.

I know...clear as mud (sorry)...just let your TIS know if you need anything. Just call or email if you get into any glitches trying to download at home. Good luck! ☺